

SnowTimes

Volume 57 Issue 02

February 2012

Upcoming Events

February 14th	General Meeting
February 18th	Wolves Game
February 28th	General Meeting
March 9 – 11th	Lodge Bus Trip
March 13th	Games Night – General Meeting / Board Nominations

Weather sketcher



Natalie Butler, 8, a student at Riley Elementary School in Arlington Heights, drew today's weather sketcher.

**As Natalie says, "I love winter because I get to go skiing".
A future Oak Park member for sure!
It Snows Therefore We Ski!**

OPSC BOARD OF DIRECTORS

2011-2012 SEASON

President	Jackie Uznanski	630-257-9027	juzi382@yahoo.com
Vice President	Bob Kozel	847-776-7473	rbtnkzl@gmail.com
Ski Master	Caroline Knoff	630-351-1021	carscience33@hotmail.com
Treasurer	Nancy Hogan	847-798-8810	nleigh0810@aol.com
Exec Secretary	Dave Breyer	847-841-1364	david.breyer@sbcglobal.net
Parliamentarian	Kevin Smith		
Corresponding Sec	John Bragdon	815-444-7783	skibumre@sbcglobal.net
Web Master	John Bragdon	815-444-7783	skibumre@sbcglobal.net
Lodge President	Bill Campbell	773-506-1015	deutsch7@sbcglobal.net
Trip Director	Mary Grzelak		opsctrips@dls.net
Membership	Jeremy LaScala		jafo@foxvalley.net
Public Relations	Tony Zasadney	630-739-0142	mactony22@earthlink.net
Snow Times	Russel Butler	847-368-1571	russelbutler@comcast.net
Social Director	Sheri Butler	847-368-1571	sfbutler@comcast.net
Advisory Board	Bob Fues	773-631-3810	fuser@yahoo.com

Our Meeting Location

CHAMPPS

955 E. Golf Rd, Schaumburg
2nd & 4th Tuesdays of the Month
7:30 pm for food & drinks
8:30 pm meeting will begin

Trips

Contact our Trip Director at
OPSCTrips@dls.net

WebMaster e-mail to
oakparkskiclub@sbcglobal.net

Web Address

www.OakParkSkiClub.org

Announcements and Condolences

Contact Corresponding Secretary, John Bragdon
815-444-7783 or
skibumre@sbcglobal.net

Membership

Requirements - age 21
Dues - \$35 per year

Changes (Address, phone number, email etc.)

OPSC Membership
P.O Box 1162
Des Plaines, IL 60017-1162

Lodge Reservations

Contact Rose Bragdon
815-444-7783
roseb53@sbcglobal.net

Lodge Address

Oak Park Ski Club Lodge
3050 State St.
Boyne Falls, MI 49713

Articles & Pictures for the Snow Times:

Please submit your contributions to the SnowTimes at least 7 days before the end of the month. Please e-mail all articles or pictures to:

russelbutler@comcast.net

Enter Snow Times in the subject line.

Prez Says!

Hello ski fans,

We're finally getting the snow as we go into February. Hope you're getting out and having a good time. My honey and I are on our honeymoon and waving at you from Colorado.

The club is getting together for a Chicago Wolves game on Saturday February 18, and all ages are welcome. We still have a bus trip to the lodge coming up in March. Anybody over the age of 21 can participate and we'll be taking the awesome party bus again. All club members are welcome to participate in the CMSC races, check the CMSC race schedule to find out where to go.

Also we need everybody to come to the meetings so you can volunteer yourselves for positions on the board, because our board's year is already coming to an end. A few new faces and fresh ideas would be wonderful in helping the group grow and continue to be fabulous. The election will be during the second meeting in March.

Hope to see you at our meetings at Champs on February 14 and February 28.

It's awesome out here, great snow and good runs. Hope you are all getting some good skiing in too.

President

Jacquelyn Uznanski



Calling All Hockey Fans

The club will once again be going to a Chicago Wolves game.

This is always a fun even so don't miss out. All are invited to join in on the fun whether member, non-member or kids.

Tickets are the same price as last year.

Date is Saturday 2/18/12

See flyer for additional details.

Thanks, Kathy.

Comments from the Editor

The calendar says that February is upon us. I see Jackie's article is mentioning wonderful ski conditions in Colorado and today we almost reached sixty degrees in Chicago. This has been crazy weather for sure. A year ago we had a blizzard and now the snow cannot even get established with all of this warm weather. Anyway I am sure winter still has plenty left to show us so get out and ski when you get the chance.

The club has a lodge bus trip scheduled for March 9th – 11th. The nice large bus will be used for this trip. Please be sure to sign up as it is sure to be a great time and do not wait until the last minute. See the flyer in this issue for more details on the bus trip. The lodge of course is open so if you want to head up there on your own just reserve your stay up there by contacting our lodge reservationist Rose Bragdon.

Kathy Mitchell has been busy selling Wolves tickets for a February 18th game. She has even ordered additional tickets although you will have to contact her if you have interest as the tickets have been going fast. See the Wolves flyer for additional details.

Sheri Butler is planning a games evening for the first meeting of March which should be a lot of fun as well. Details of this are also provided in this issue for your viewing pleasure.

As you may have noticed from Jackie's article it is that time of year once again for board nominations. Our club really could use some new volunteers and ideas to help our club grow. Does this mean you? Of course it does!

Finally a big thank you to Tony Zasadney for providing an excellent article and associated group picture of our River's Casino outing this past month. Nicely done Tony!

Hope to see you all on the upcoming lodge bus trip, general meeting or social event in the near future.

Your Snow Times Editor

Russ Butler

Boyne/Michigan			March 9th – 11th 2012
	<i>Mar 9th - 11th 2012</i>		Friday – Sunday 24 spots
Pricing:	Regular	Deposit	Final Payment Due By
	\$350.00	@ sign up \$125.00 1/10/2012 \$100.00	Feb 14 th , 2012 \$125.00
Transportation:	<p>TRANSFERS: Roundtrip transfers between Chicago and Michigan Bus shuttles to the Hills.</p> <p>Bus will leave from TBD.</p>		
Accommodations:	<p>2 night lodge accommodations at the Oak Park Ski Club lodge in Boyne. Rooms will be divided after trip closes.</p>		
Skiing:	<p>1 day skiing Boyne Highlands, 1 day at Boyne Mountain</p>		
Other:	<p>Sandwiches and non-Alcoholic drinks on bus provided. Continental Breakfast Sat – Sun Dinner on Saturday – Spaghetti</p>		
Trip Leader:			



CHICAGO WOLVES GAME

SATURDAY FEBRUARY 18, 2012 - 7PM

TICKETS \$15.00

Members, Non-Members, Kids

CONTACT KATHY MITCHELL

847-541-6603

k.a.mitchell@sbcglobal.net

Happy February Birthdays

Bill Heneghan

Dino Gius

Grace Ordakowski

Kathy Mitchell

Rose Bragdon

Scott Swing

Yetman Joe

Dave Breyer

February 1st

February 2nd

February 3rd

February 11th

February 13nd

February 18th

February 20th

February 23rd

OAK PARK SKI CLUB

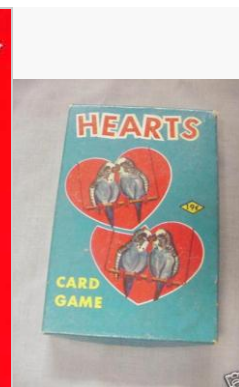
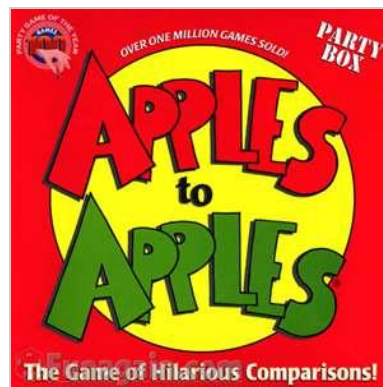
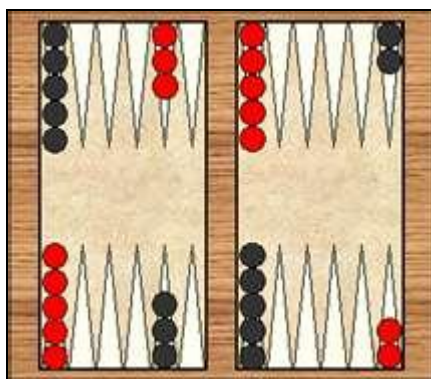
March 13, 2012 – Game Night

First Meeting in March

Normal Meeting Spot: Chammps
955 East Golf Road
Schaumburg, IL
(847) 240-1333

7:00pm

Bring your favorite game



Everyone is welcome: Members and Non-Members
Hope you can make it

Please call Sheri Butler 847-224-5228 with questions

OPSC Visits Rivers Casino, Bar of the Month: PR Report

Story by Tony Zasadney for the Snow Times; photo by the author

The meeting time: 8 PM. The date: Friday January 27, 2012. The place: Canopy Tap, a classy high-ceiling seven-station buffet restaurant located inside the Rivers Casino (opened Summer 2011), Des Plaines. Our attendees were Sheri (the event organizer) and Russ Butler; Diane Butler, Al Federman, Pat Mitchell, Dave Breyer, Mary Grzelak, Bob Kozel, Bobbi Roberts, Brian Swanson, Gus Chandler, Dave Workman and this writer/snapshooter.

But after everyone arrived we decided to move to Flipt, a more modest dining spot, actually a well-lit but casual grill that served specialty sandwiches and their Signature Burgers. So? Anyway, after a group photo was taken, we agreed to fan out and take our chances on, what else? Games of chance, of which there were many. Rivers boasts 1,050 slots and 48 table games, all radiating from a sleek circular lounge bar called Lotus, located in the center of the 43,000 square foot gambling floor. There are seven restaurants on the perimeter of the game floor, ranging from the definitely upscale (read “expensive”) Hugo’s Frog Bar and Chop House at about \$52 per entree, down to, well whaddya know, the Flipt.

Gus, Bobbi, Dave, and this writer eventually gravitated over to the far east wall studying the various slot machine diehards at play. Rivers is an enormous place (about an acre of floor space) with rows of colorful blinking slots under low-key indirect lighting. Many attractive well-dressed young women, usually with their dates, could be seen stepping between slots and table games, as if checking out the action. Still standing at our spot, we noticed a long packed line of people queued up almost incredibly for about eighty feet waiting to get into a bar and restaurant called the Cube. They were there for Friday night live entertainment scheduled for the Modern Day Romeos, a popular local band. Eventually we all wound up at one of the craps tables and witnessed some action, such as Pat rolling lucky dice for this one nice payoff. Seated next to her was Brian who seem to be doing pretty well himself.

There were no Oak Parkers at the roulette table, but this writer could have used Lady Luck at his dollar slot machine. After pulling the handle repeatedly he earned two Gaming Vouchers, one for the princely amount of “\$2.00 Two dollars and no cents” and the other for “\$0.04 Zero dollars and four cents”. No way to break the bank. But Rivers still wants a low winner like him back - because at opposite ends of each voucher it read, “Insert this side up”. How

nice. Maybe, on the way home, your writer should have handed the slips to the homeless guy at the Devon and River Road traffic light who holds the sign reading “Will Work For Food”? The needy fellow could have gladly redeemed them I suppose, that is, if security would have let him in.

Anyway, our congenial floating party eventually broke up around ten, bidding so long all around to those still around and heading home, a good time had by all. Thank you, Sheri and Russ, for another memorable event!



We in? Our Mean Lookin' Gamblin' Bunch at the FLIPT at River's Casino

L to R: Al Federman, Pat Mitchell, Dave Breyer, Mary Grzelak, Brian Swanson, Diane Butler, Bobbi Roberts, Sheri Butler, Tony Zasadney.

Seated: Gus Chandler, Russ Butler. Not shown, arrived late: Bob Kozel and Dave Workman. (Shot snapped by well-meaning lady volunteer who really succeeded in cancelling the color balance setting [since somewhat corrected] as she hunted for the shutter button.)

LODGE NEWS



Directions to the Lodge

(From Chicago Area)

Take I-94 East into Michigan. Then I-196 to Grand Rapids, to 131 North. The lodge is about 6.5 hours from Chicago.

(From Detroit Area)

I-75 north to exit 282 to Gaylord, take M 32 west to US 131 North to Lodge. Distance around 260 miles; drive time 3.5 to 4 hours

After you pass Cadillac on 131 North, there's about another hour to go. When you see the Boyne Mountain entrance sign on your left, slow down and turn right before the Boyne Vue Motel sign. The lodge is just past the tracks on your right.

** Winter Lodge Rates **

(November - April)

Members - \$30 per night

Non-members (Guest of member) - \$35 per night

Child under 12 – Free (\$10 per stay, if not a relative of the adult staying at the lodge)

13 – 17 - \$10 per stay

18 – 20 - \$30 per stay



The Lodge Lizzard

We're back from a few weekdays at the Lodge. A bit of rain kept us inside on Monday morning, so we decided to clean-out various bits of archeology and other junk from a multitude of drawers & cabinets. It's amazing what you can dig up from this building used by Oak Park since the early 1960's. Most important: Cooking equipment of all types – from large pots to flatware – has been rationalized. Some old cruddy pots & pans are on their way to the dump, while utensils, flatware/knives and towels each have a separate drawer. Questionable food items either past their toss-by date or sporting strange colors were duly pitched. Lesson learned: PLEASE CLEAN & DRY EVERYTHING THOROUGHLY AND PUT IT WHERE IT BELONGS.

OK. Enough boring administrative stuff. Sign up for the Lodge Bus Trip scheduled for March 9-11. And be sure to plan early, plan often. The best way to use your Lodge is to buy a pass and go up during the week from Sunday thru Friday. Please remember that you MUST call to make your reservations well in advance of your stay in this busy season.

Local Lizzard Emeritus and Lodge V.P. Greg Fosler as well as housekeeper Ruth will be keeping an eye on things for all us other snow-junkie Lizzards this season.

Basic prices for staying at the Lodge:

Summer: \$20 members / \$25 non-members

Winter: \$30 members / \$35 non-members

Annual Pass, good for 15 stays or one year, whichever comes first: \$175

Please contact Rose Bragdon for reservations.

We look forward to seeing you at the Lodge.

“Wild Bill” Campbell, Da Chief Lizzard